

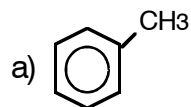
WS 10.11 AROMATIC COMPOUNDS

1. What do the terms ortho, meta, and para mean?

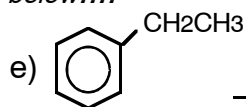
ORTHO: 1 & 2 META: 1 & 3 PARA: 1 & 4

2. Write the IUPAC name for each of the following: (remember- if there are 2 functional groups, use o, m, p)

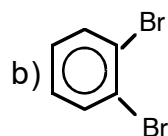
....check answer bank below....



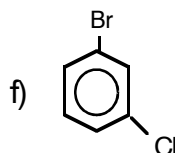
toluene



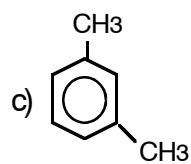
ethylbenzene



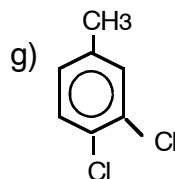
o-dibromobenzene



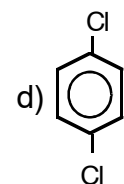
m-bromochlorobenzene



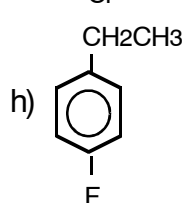
m-methyltoluene



3,4-dichlorotoluene



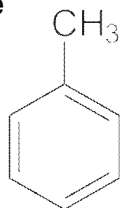
p-dichlorobenzene



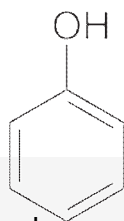
p-ethylfluorobenzene

3. Write the line formula for each of the following:

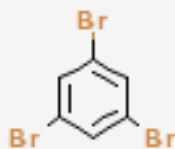
a) toluene



b) phenol

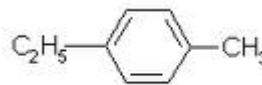


c) 1,3,5-tribromobenzene

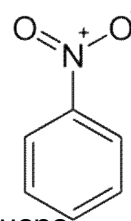


d) naphthalene **SKIP**

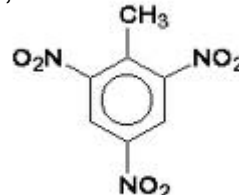
e) p-ethyltoluene



f) nitrobenzene



g) 2,4,6-trinitrotoluene



h) paradichlorobenzene

